

SAVE BRITAIN'S HERITAGE



SAVE Britain's Heritage welcomes Government intervention in M&S's demolition plans – and urges action

SAVE Britain's Heritage has welcomed the decision by Michael Gove to pause plans for the demolition of M&S's historic Oxford Street store in central London and called on supporters to write to the Communities Secretary asking for a public inquiry.

[SEE HERE FOR THE LATEST ON THE CAMPAIGN.](#)

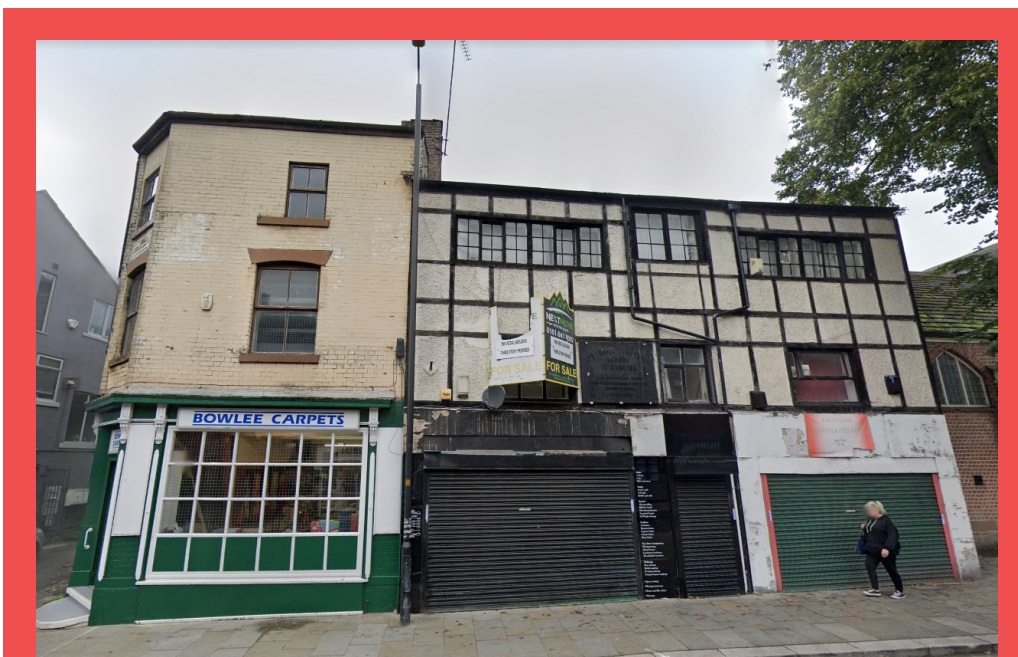


EVENT: A Total Artwork: Important new perspectives on the threatened Oldham Mural

George Mayer-Marton's 'dazzling' Oldham Mural is at risk – just as its significance is being better understood. Join us for this special online event organised by SAVE Britain's Heritage and the Twentieth Century Society.

Hear from an expert panel of speakers as they discuss new perspectives on this vulnerable work which is one of only two ecclesiastical murals by Mayer-Marton that survive in situ, and the only one incorporating both fresco and mosaic.

[BUY TICKETS HERE](#)



LISTING NEWS FLASH

We are delighted to announce that a listing application submitted by SAVE to list a pair of 18th century former silk weavers' cottages in Rochdale has been approved by the Department for Digital, Culture, Media and Sport.

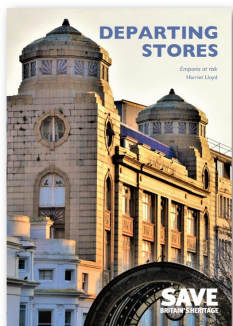
In its assessment report recommending listing, Historic England note that 83-87 Long Street, Middleton is a rare and unusually early surviving example of a domestic loomshop with an attached dwelling, for which this area of Rochdale was famous in the 18th and early 19th centuries.

[SEE HERE TO VIEW THE NEW LISTING ENTRY.](#)



Medieval church remains under threat at Anglia Square – SAVE backs calls for listing

Local conservation experts have uncovered the possible remains of the medieval parish church of St Olave's amongst a complex of flint warehouses in Anglia Square, Norwich. SAVE Britain's Heritage is supporting a listing application in light of the special significance of the site. [READ THE FULL STORY HERE.](#)



COPIES OF OUR LATEST REPORT NOW AVAILABLE

By popular demand - our full-colour 100-page report on historic department stores from around the country is now available in hard copy. As featured in the Times, Guardian & Country Life. Follow the link below to purchase your copy!

[CLICK HERE TO BUY YOUR COPY](#)



Objections mount over proposed demolition of Islington landmark

SAVE Britain's Heritage has objected to plans to demolish Angel Square, a postmodern office building at the gateway to Angel in north London. [SEE THE FULL STORY HERE.](#)



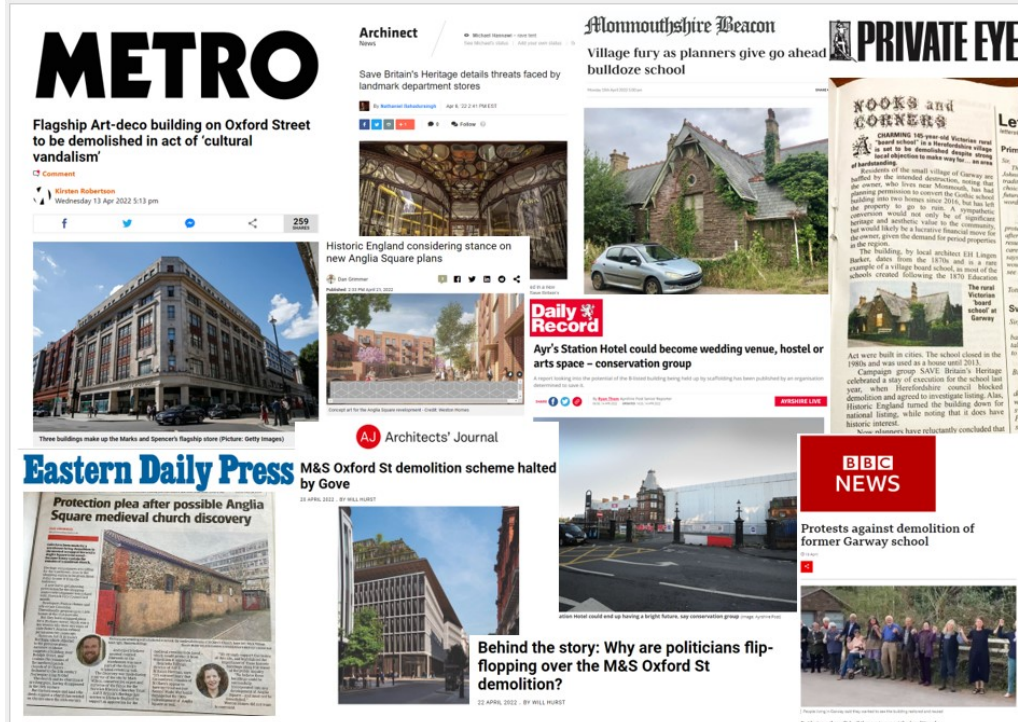
Support SAVE Britain's Heritage

SAVE is a national independent charity that campaigns for threatened historic buildings and sustainable reuses.

Support us as a Friend or Saviour, or make a donation today and know that your money goes straight to the heart of conservation campaigning.

[CLICK HERE TO SUPPORT SAVE](#)

SAVE IN THE NEWS



News that Secretary of State Michael Gove is to review the approval of plans to demolish M&S Oxford Street gained coverage in the [Architects' Journal](#), [Metro](#), [Building.co.uk](#) and the [Evening Standard](#). Our latest report on Department Stores was featured in [Building Design](#), [Country Life](#), [The Daily Echo](#), [Nottinghamshire Live](#), the [Bournemouth Echo](#) and [Archinect](#). The submission of new plans for Anglia Square in Norwich was featured in [Norwich Evening News](#) and the [Eastern Daily Press](#). Our support for a bid to list the remains of a medieval church in Anglia Square was also covered in the [Eastern Daily Press](#).

SAVE's legal challenge against the demolition of a Victorian village school in Garway, Herefordshire was published on [BBC News](#) and in [The Monmouthshire Beacon](#) and Private Eye's [Nooks & Corners](#) column. In Scotland, SAVE's proposals for Ayr's historic Station Hotel were featured in the [Ayr Daily Record](#).

BUILDING OF THE MONTH- May 2022



Goole Arcade, East Yorkshire

With a gracious nod across the North Sea to the red brick gables of Holland, Goole Arcade is one of several buildings in the town designed by Henry Bell Thorp. Thorp also designed the nearby Bank Chambers (now the East Riding Council Chambers), the only commercial building in Goole to make it into Pevsner. [SEE FULL DETAILS ON THE BUILDING HERE.](#)

BUILDINGS AT RISK NEWS



April's update of our Buildings at Risk Register entries in the North West and Merseyside has revealed a clutch of promising new possibilities for a range of buildings, as well as some which are now back in active use. [SEE HERE FOR ALL THE DETAILS.](#)



CALLING ALL PHOTOGRAPHERS!

We are looking for volunteer photographers to take photos of new buildings nominated for inclusion in our Buildings at Risk Register. Particular assistance is needed for new entries in Northumberland, Shropshire, Wiltshire, Somerset and Dorset. If you can help, please get in touch with Liz Fuller at liz.fuller@savebritainsheritage.org.

It's encouraging to see the Secretary of State's decision reviewing the M&S HQ demolition proposals in response to the national campaign. We've got more in the pipeline on M&S over the coming weeks as we await a decision from Gove – so watch this space. Our campaign on the wider issue to department stores across the UK has touched a nerve with many people – and we've been thrilled the with the reception that the SAVE report has received. We've printed a limited number of copies – get yours [HERE](#).

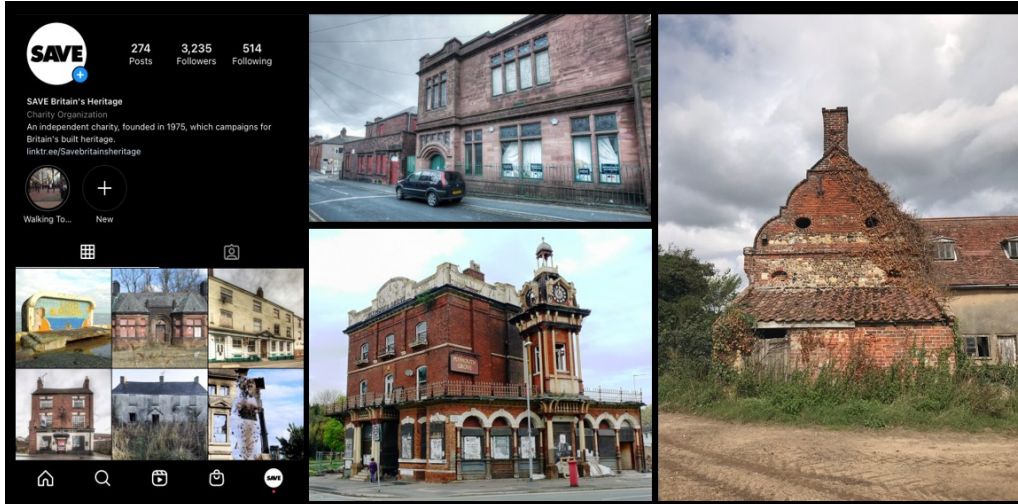
I'm also very much looking forward to the [Oldham Mural online event on Tuesday 10th May](#). We're delighted to be hosting Clare A.P. Willson,

professor of the History of Western Art at Glasgow University, Sarah MacDougall, director of the Ben Uri Gallery and Museum, and Nick Braithwaite, great nephew of the artist George Mayor-Marton. I hope very much you can join us for an early evening discussion of the history and significance of this dazzling masterpiece – and the current campaign to save it.

Very best wishes,

Henrietta Billings

Director, SAVE Britain's Heritage



Wonderwall Wednesdays

Get your weekly Buildings at Risk fix by checking our weekly Wonderwall Wednesday posts on Twitter and Instagram, showcasing buildings from our [at Buildings at Risk Register](#).



Photo Credits from top: Before and after images of M&S Oxford Street (Daily Mail) / George Mayer-Marton mural in Oldham (Mayer-Marton Estate) / 83-87 Long Street, Rochdale (Google Maps) / The remains of St Olave's church in Anglia Square, Norwich (Mark Wilson) / Front cover of SAVE's new report Emporia at Risk (SBH) / 1 Torrens Street, Islington (Wikipedia) / T J Hughes in Eastbourne (Alamy) / Goole Arcade (Eveleigh Photography) / The Grand Casino in Southport (Eveleigh Photography)



Copyright © 2022 SAVE Britain's Heritage. All rights reserved.

Want to change how you receive these emails?
You can [update your preferences](#) or [unsubscribe from this list](#).